

**HOW TO
BUILD A**

**PYRAMID
STRUCTURE**

THE PYRAMID PRINCIPLE

Part 2

The thing you need to remember...

The **three rules** to build a pyramid

1. **Ideas at any level** in the pyramid must always be **summaries** of the ideas grouped below them.
2. Ideas in each grouping must always be the **same kind** of idea
3. Ideas in each grouping must always be **logically ordered**.

TODAY's Class

Build a pyramid for
Section 5 of “Impact
Assessment Card:
Communicating Risks
and Benefits of AI
Uses”

Students' Pyramids (send to davide.ghia@polito.it)

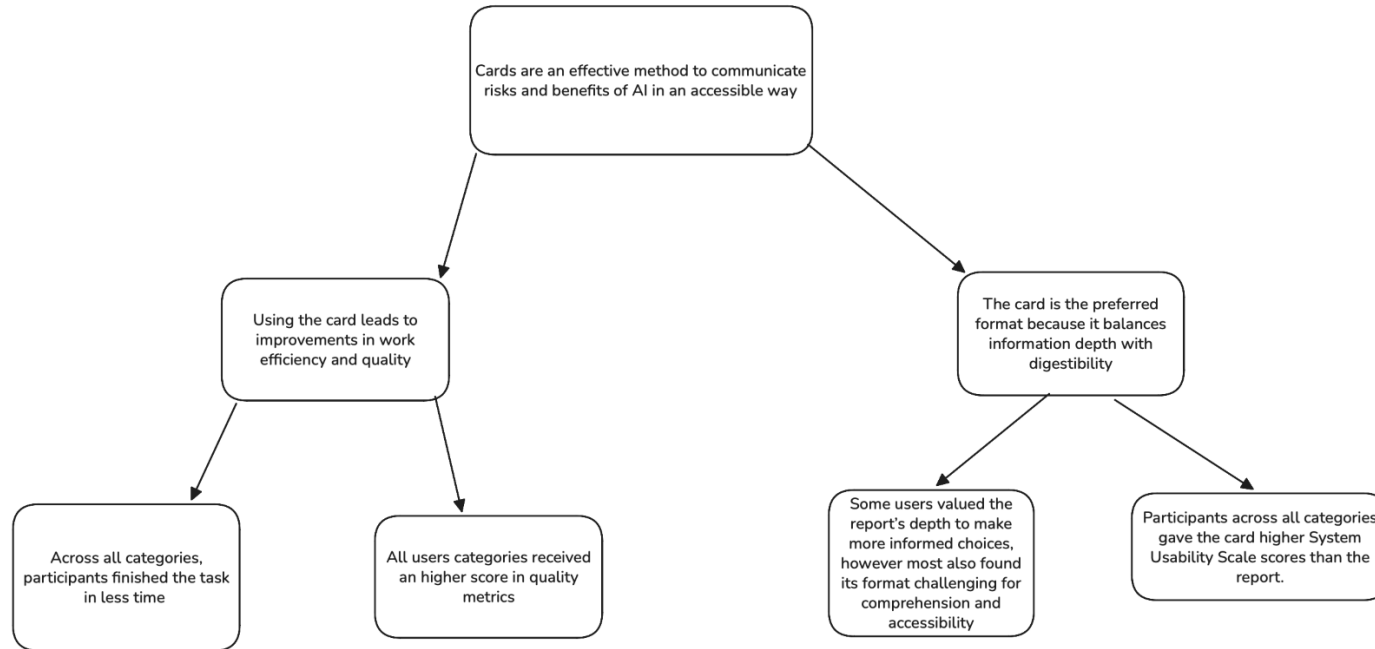
Pyramid 1

Situation --> The risks and benefits of AI systems should be disclosed

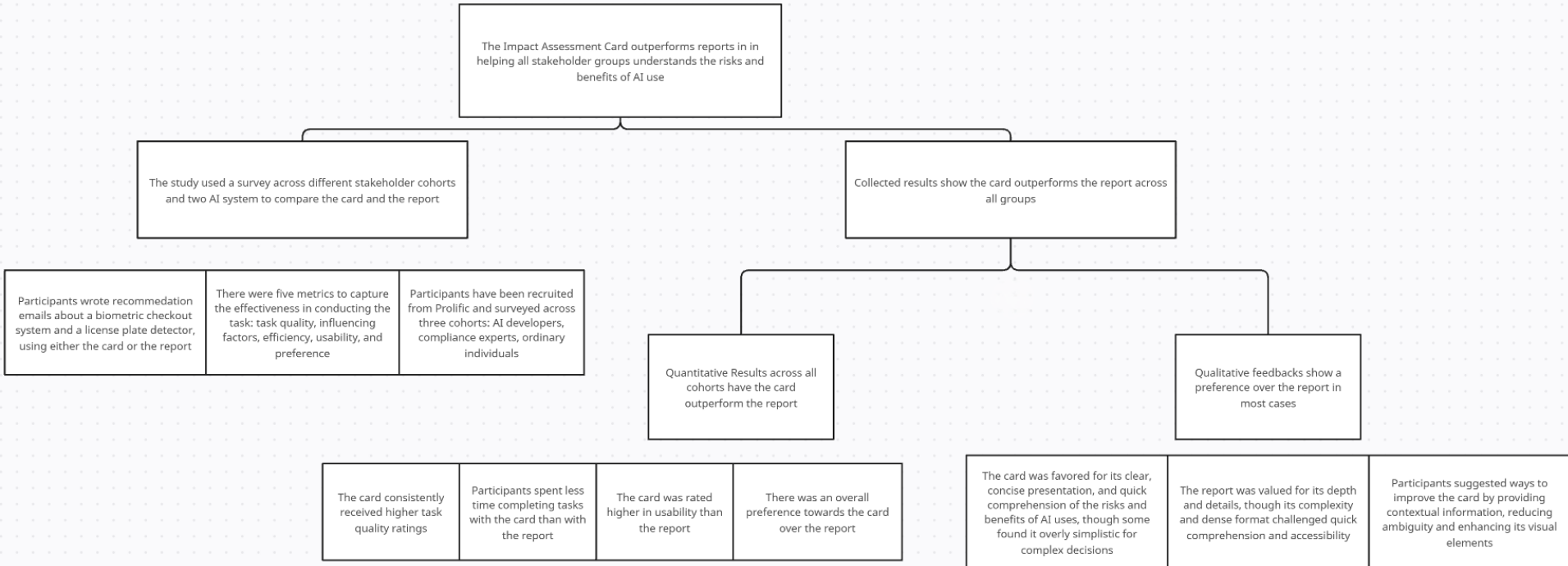
Complication --> Current methods are not accessible to people without technical expertise

Question --> Is there a better way to communicate risks and benefits of AI?

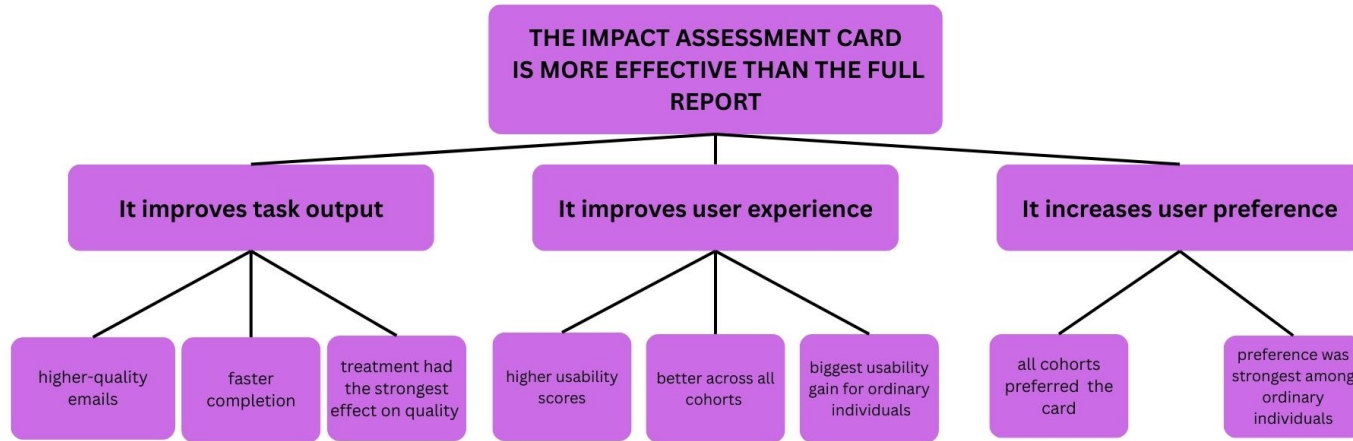
Answer --> Yes, [Key Line]



Pyramid 2



Pyramid 3



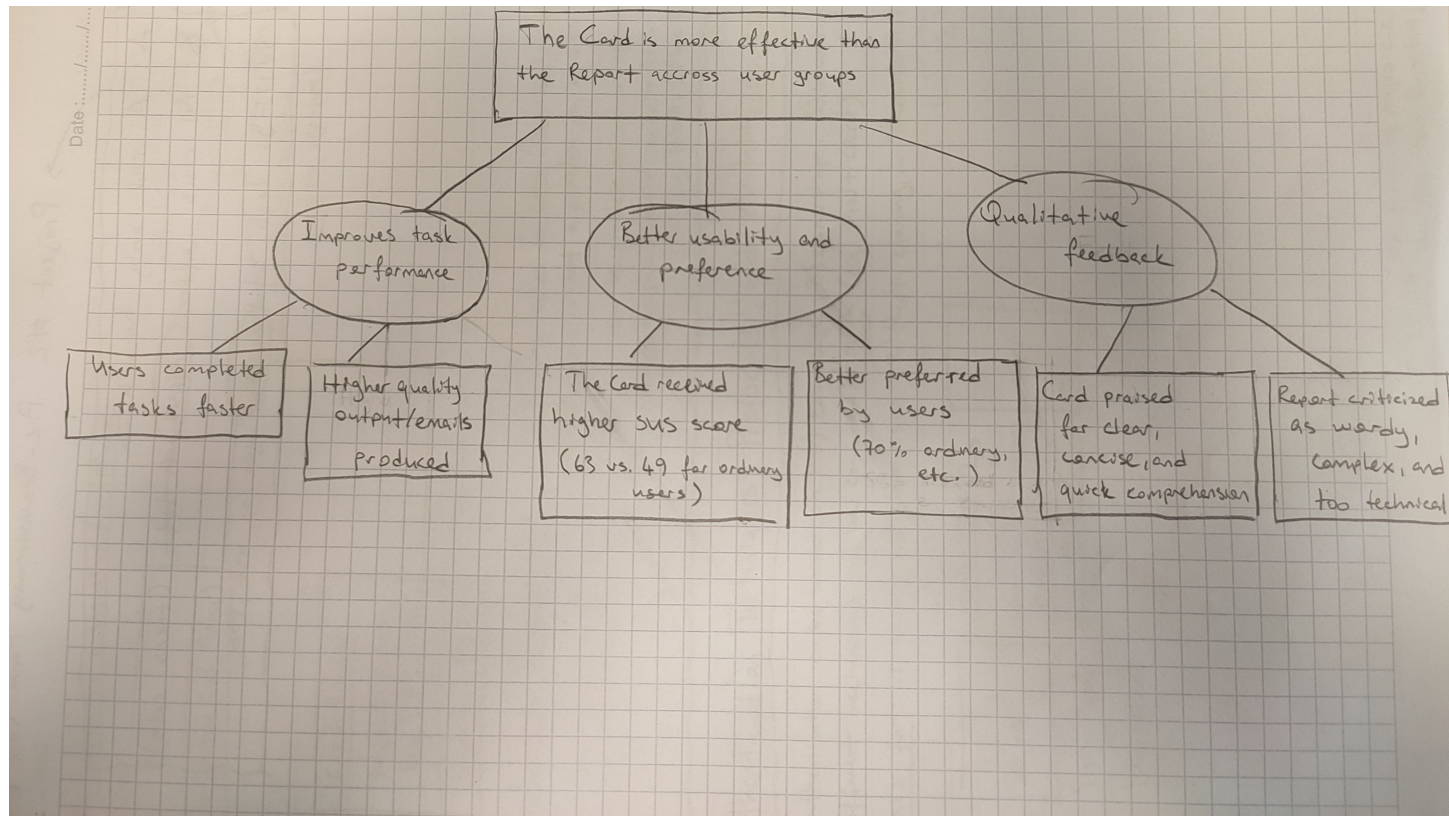
Pyramid 4

Section 5 - Top-Down Pyramid

Impact Assessment Card vs. conventional report



Pyramid 5



Pyramid 6

Solution

Section 5: Large-scale Study

Evaluate the effectiveness of the final card against a baseline report across three cohorts

How?

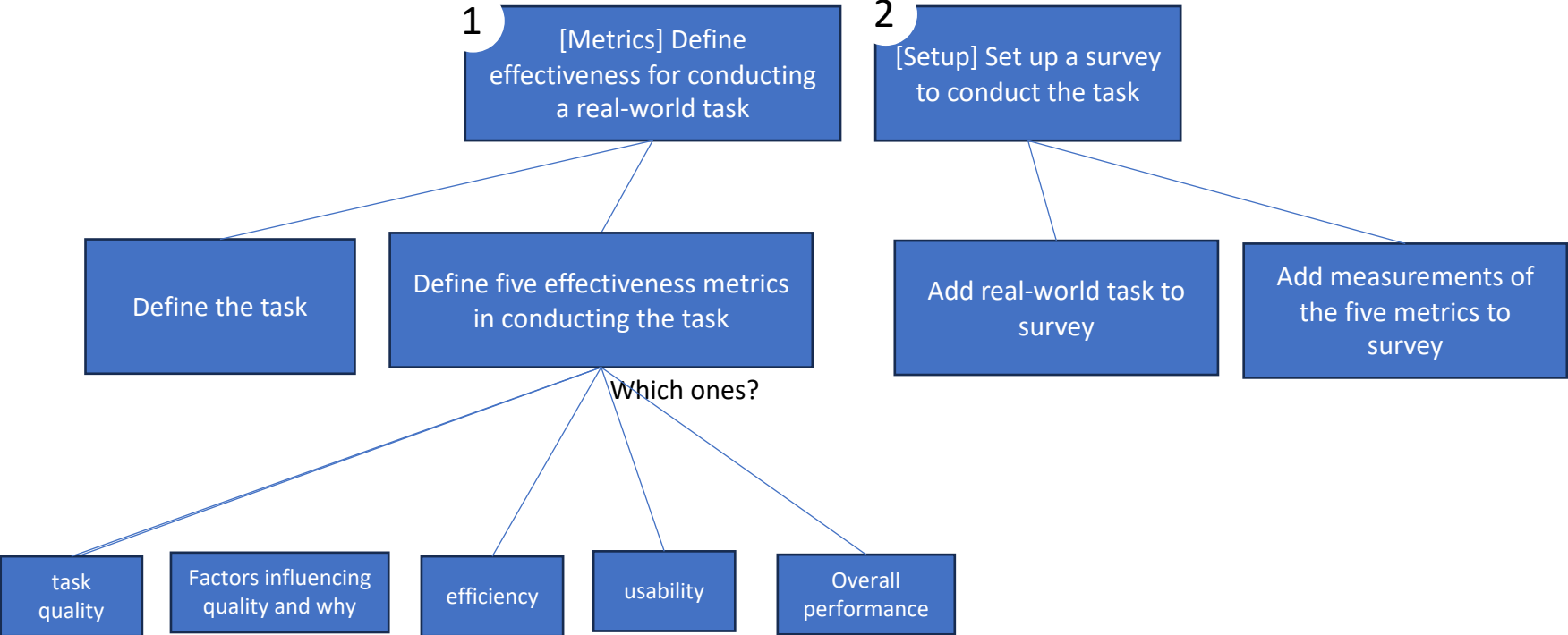
1 [Metrics] Define effectiveness for conducting a real-world task

2 [Setup] Set up a survey to conduct the task

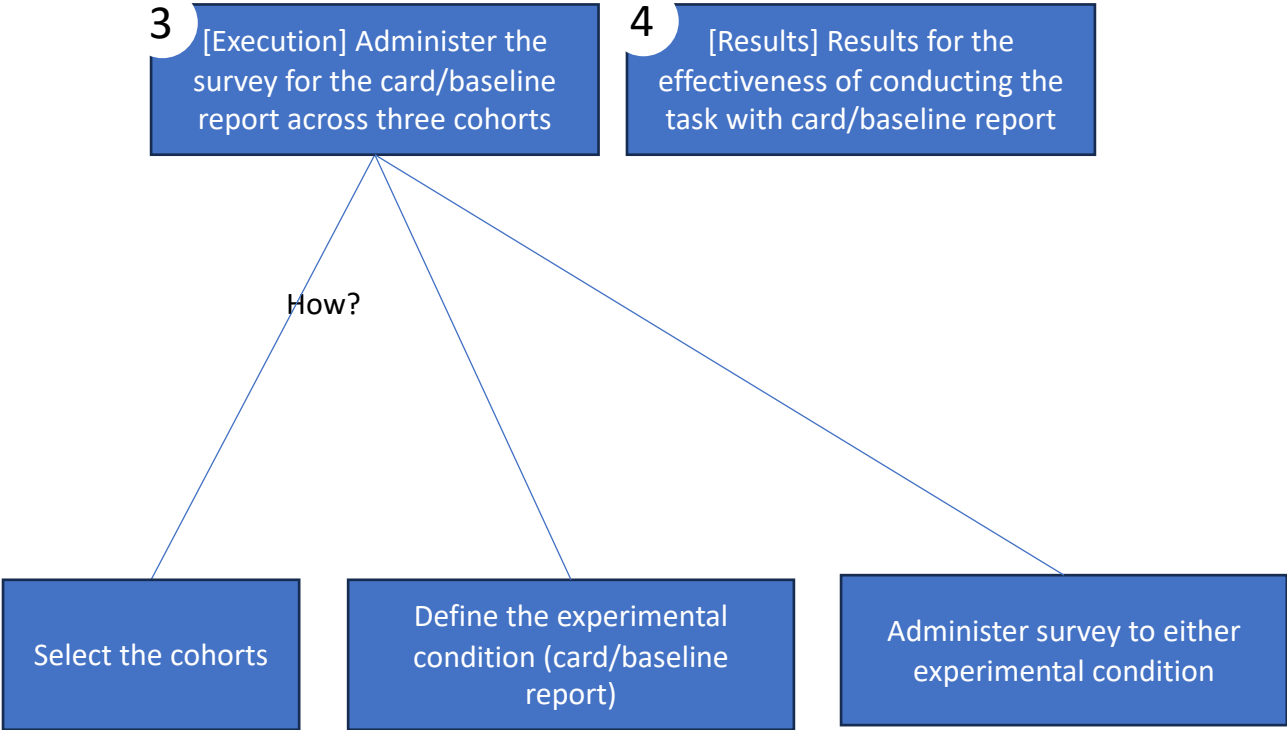
3 [Execution] Administer the survey for the card/baseline report across three cohorts

4 [Results] Results for the effectiveness of conducting the task with card/baseline report

Section 5: Large-scale Study



Section 5: Large-scale Study



Next Lecture

**Use all the material of
“Presenting to Win”
Parts 1 and 2 (see
Timetable) to prepare an
individual presentation**

WHAT YOU DO KNOW

- Point B: it should be super clear
- WIIFY: I'll convince you that I have a solid plan to execute the project
- Think about the delivery: try to engage the audience with opening and reminders here and there
- Max time: 10 minutes
- 20% of your grade (or extra points)